

DIAMOND RACK

ALLYGN
FRAMEBUILDER OWNED COMPONENT COMPANY

ALLYGN.DE

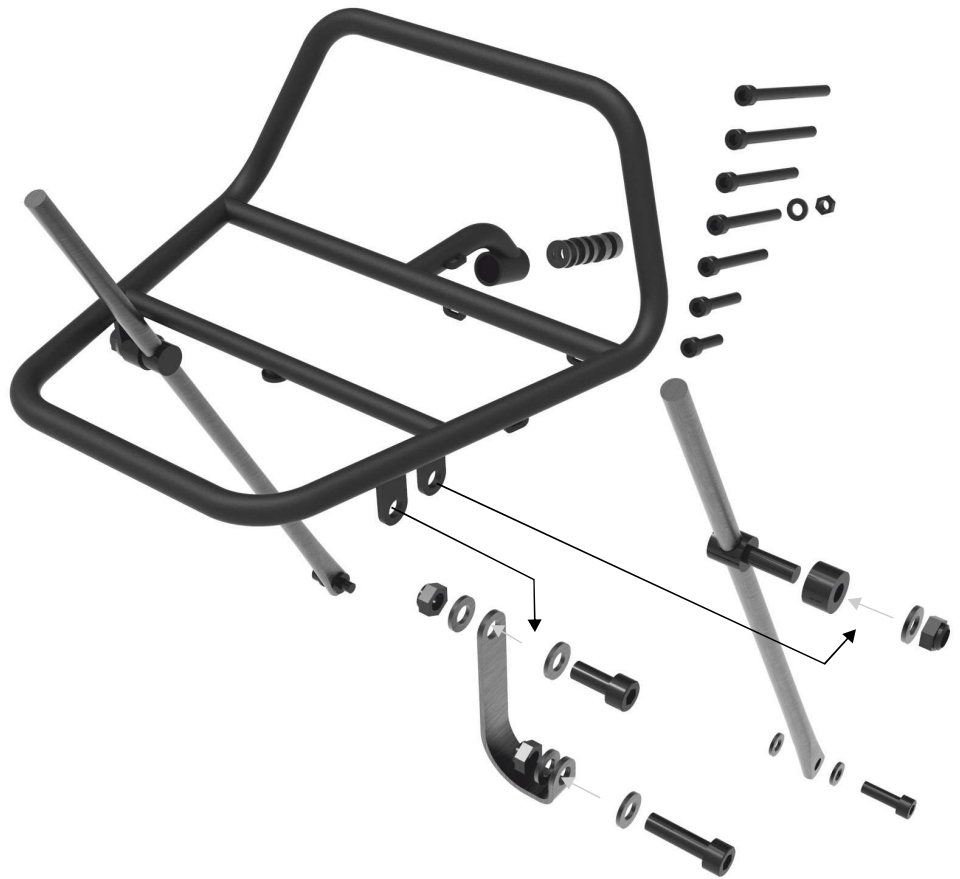
ALLYGN

Thank you for purchasing this ALLYGN Diamond Front Rack. ALLYGN is a true framebuilder owned component company - aiming to make high end bicycle components more accessible to more cyclists.

This front rack was brewed and born right here in the Fern Bicycles workshop in Berlin. Over the past years we handbuild numerous iterations and kept on improving this unique 3D bend diamond design. Finally we are proud to present this production model, which was made with the same great attention to detail and from the same thin walled high strength 25CrMo4 steel as if it would be handmade by us!

This rack allows you to carry a handlebar bag, a sleeping bag or a sixpack of beer,... what ever it takes to improve your bikepacking or randonneuring adventure. So put that thing on your bike, pack your stuff and go out for a ride!

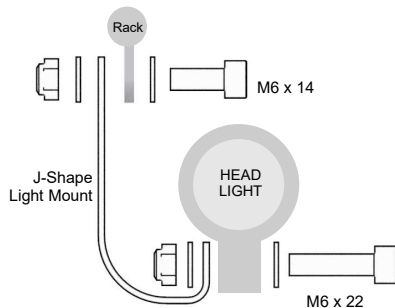
Cheers, Flo.



PARTS INSIDE THE BOX:

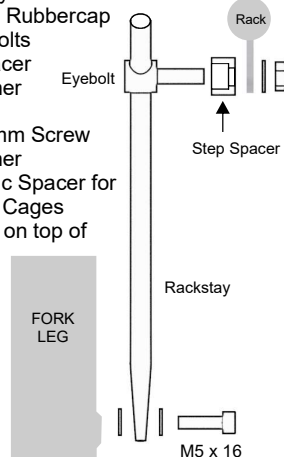
LIGHT MOUNT PARTS

- 1x J-Shape Light Mount
- 1x M6 x 14mm Screw
- 1x M6 x 22mm Screw
- 4x M6 Washer
- 2x M6 Nut
- Many Cablebinders



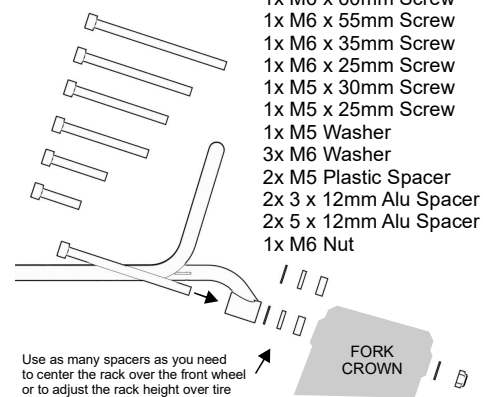
RACK STAY MOUNT PARTS

- 2x 8mm Stays
- 2x Stay End Rubbercap
- 2x M6 Eyebolts
- 2x Step Spacer
- 2x M6 Washer
- 2x M6 Nut
- 2x M5 x 16mm Screw
- 4x M5 Washer
- 4x M5 Plastic Spacer for Anything Cages mounted on top of the stays



FORK CROWN MOUNT PARTS

- 1x M6 x 90mm Screw
- 1x M6 x 80mm Screw
- 1x M6 x 70mm Screw
- 1x M6 x 60mm Screw
- 1x M6 x 55mm Screw
- 1x M6 x 35mm Screw
- 1x M6 x 25mm Screw
- 1x M5 x 30mm Screw
- 1x M5 x 25mm Screw
- 1x M5 Washer
- 3x M6 Washer
- 2x M5 Plastic Spacer
- 2x 3 x 12mm Alu Spacer
- 2x 5 x 12mm Alu Spacer
- 1x M6 Nut



TOOLS YOU NEED:



- 1 Hacksaw
- 2 Loctite 243
- 3 Sandpaper
- 4 Marker
- 5 File
- 6 Clamp or Vise
- 7 10mm Wrench
- 8 4mm and 5mm Allen Key

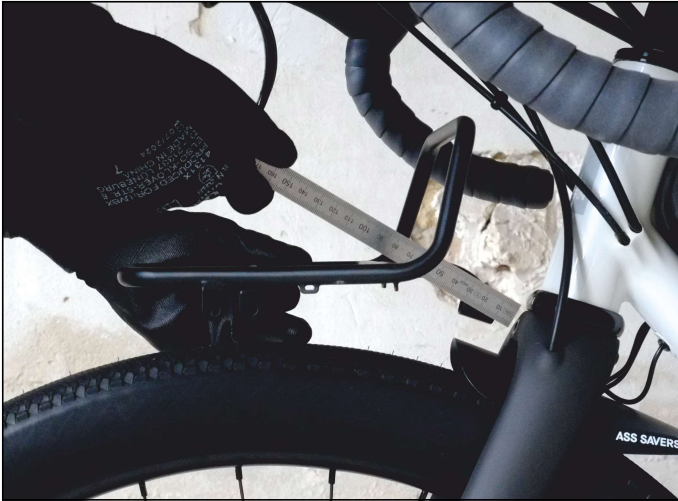
!WARNING!

The installation of the front rack is only suitable for skilled bicycle mechanics. You can seriously harm yourself, so wear safety equipment!
If the installation is done wrong, serious damage to your bike and health may occur!

INSTALLATION TO CARBON FORKS CAN BE DANGEROUS!
ALWAYS CHECK BACK WITH THE MANUFACTURER OF YOUR BIKE / FORK IF THE FORK MOUNTING POINTS ARE SAFE FOR RACK INSTALLATION!

If you have any problems with installing the rack to your bike, just go to the next bike shop around the corner, they will help you! **SUPPORT YOUR LOCAL BIKE BUSINESS!!**

1 INSTALL THE PLATFORM



Place the front rack centered over the front wheel. Measure the distance between fork crown mount and rack and select spacers accordingly.



Select the right length M6 bolt which fits best your specific fork crown. Insert bolt into the rack attachment barrel, fit the spacers and then screw the rack loosely to the fork crown. Do not tighten it up now.

2 INSTALL THE STAYS



Install the rack stays loosely to the rack as shown on the illustration on page 2. Then mount the stays to the midfork eyelets. Fasten the screws loosely at this point, so you can still adjust the rack angle at this point.

3 LEVEL THE PLATFORM

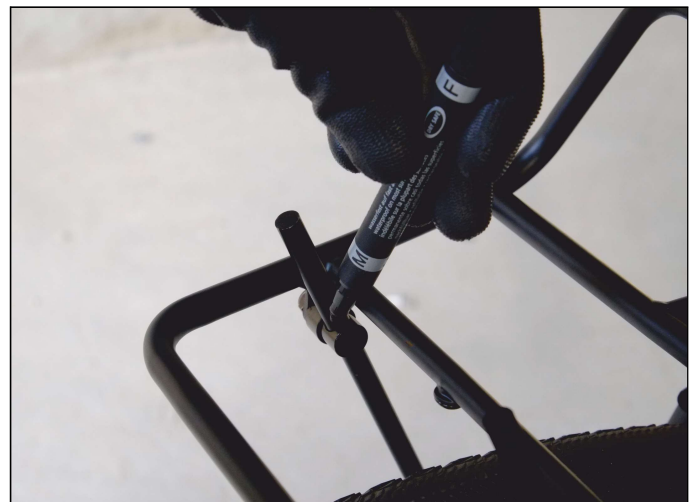


Check in side view if the rack is level to the ground. Use an spirit level if you have one. Adjust the rack angle in front view and check if it's level relative to the headtube. Check side view again and re-adjust if necessary.

4 CUT THE STAYS

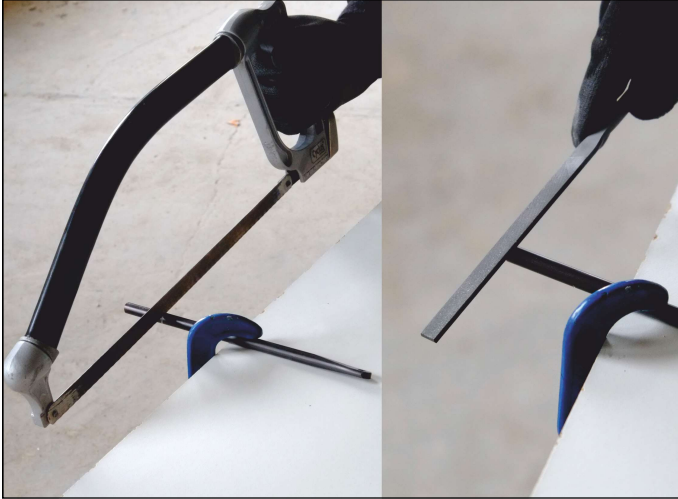


Gently tighten eyebolts on rack (1) first. Then tighten the stays to the mid forkleg lowrider mounts alternating left and right (2). Finally tighten the M6 to the fork crown (3). Double check again if the rack is really level in both views. Re-adjust if necessary.



Mark the stays ca 10mm over where they exit the eyebolt drilling. Take the stays off the rack and cut them where you marked them. File or sand the stay ends and remove all burs or sharp edges.

5 RE-INSTALL THE PLATFORM



After cutting the stays repeat steps 1 - 3 and use Loctite 243 for mounting the M6 fork crown bolt and M5 bolts to the forkleg lowrider mounts.



Put the rubber caps over the rack stay ends.

6 INSTALL A FRONTLIGHT



If you have a frontlight which can be mounted upside down then just mount it to the light tab on rack using the M6 x 22mm bolt, washers and nuts.

7 INSTALL THE J LIGHT MOUNT



For lights which could only be mounted upright, please install the ALLYGN J-MOUNT as shown on page 2.

8 FASTENING THE CABLES



Put the zip ties in a figure 8 through the racks cable tabs. Run the cables left and right to the tabs. Do not tighten the zip ties yet! Arrange all cables neatly and make sure you have enough cable for frontlight adjustment. Finally secure the zip ties and cut the ends.

...AND FINALLY, YOU ARE READY TO GO!!



After your first ride please check if all bolts and screws are still tight!!
Check all bolts regularly!
For suitable bags check out our handmade bike bags at www.gramm-tourpacking.com

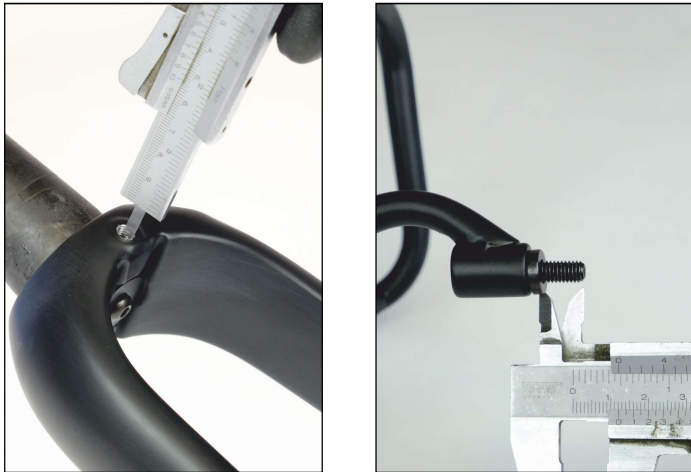
ADDITIONAL INFOS:

EYEBOLTS AND STEP SPACERS



We found out that some people seem to forget to install the stepped washers on top of the eyebolts. It is very important to install those parts correctly, otherwise the rack stays will not carry the load and the rack will not be safe to use !!!

CARBON FORK CROWN MOUNTING



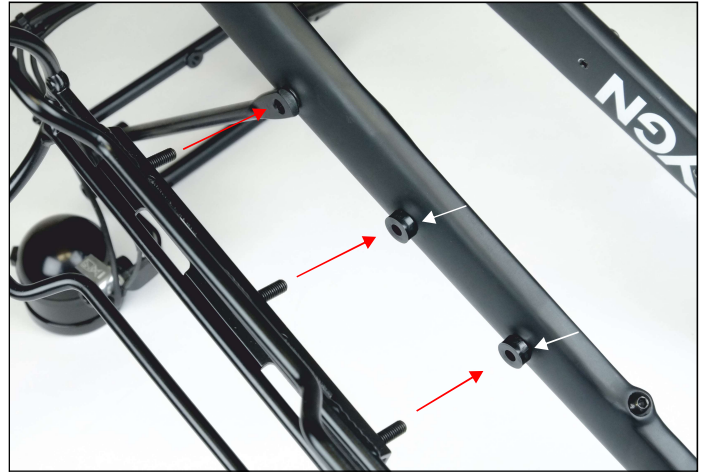
On carbon forks the mounting points are sometimes deadend threads so it is very important not to use bolts that are too long as this can result in damaging the mounting point and / or the fork itself. Measure how far the thread goes inside and select the length of bolt accordingly!
ALWAYS CHECK WITH THE MAKER OF THE FORK IF THE MOUNTING POINTS ARE SAFE FOR RACK INSTALLATION!

PROTECT THE RACK'S PAINT



We deliberately chose a hard wearing coating for the racks, but it is still just paint and if used hard it will wear off, there is no way to avoid that! You could use electrical tape or (even better) 3M helicopter tape in order to protect the racks paint. If the paint wears off and you see blank metal, no worries, just use a little bit of oil to prevent it from rusting. Light surface rust will not seriously damage the rack!
Please understand that we can't give any warranty to the racks paint!

ANYTHING CAGES ON TOP OF THE STAYS



If you want to use anything cages mounted on top of the racks stays, then please use the included 12 x 5 x 5mm plastic spacers to make up for the rack stays thickness.

M5 FORK CROWN MOUNT



If your fork has an M5 fork crown mount then use the M5 bolt and washer. If needed, use one or more spacers and select the right length of bolt. Please use Loctite 243 medium tight or similar!

PROTECT THE RACK FROM RUST



If you live in very moist and wet areas, especially close to the sea, we recommend to use some spray lubricant like WD40, Fluidfilm, Mike Sanders, etc inside the rack. Spray a small amount inside every venthole at the backside of the rack before installation. Move the rack around and let excess oil come out of the ventholes. You can also oil the hardware parts such as bolts and lightmount in order to prevent them from rusting.
Make sure there is no oil dripping on your brakes and discs!!